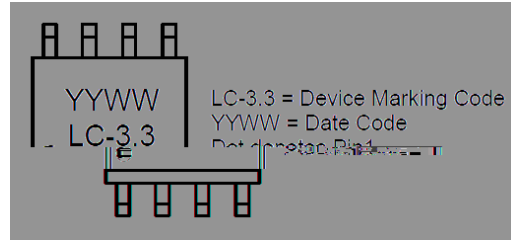


Features

- Protects t k o lines in command di Z Z erential mode
- Ultra lo k leage . nA le j el
- Lo k operating oltage . 3.3V
- Moisture Sensiti j ity e j el 3 per > -STD-0 & 0
- > EDEC SOP- , pac_ age
- Mar_ ing .



Maximum Ratings fl Ta 1 &) š C unless other k ise speci Z ied Ł

PARAMETER	SYMBOL	VALUE	UNIT
Operating Temperature Range	T	-)) to Ž % &)	-
6 WRUDJH 7 HPSHUDWXUH 5 DQJH	67°	7 WR	-
, (& (6' \$LU	9(6' Å Å	"	.9
, (& (6' & RQWDFW		"	.9
3 HDN 3 XOVH 3 RZHU	3 Å Å		:
3 HDN 3 XOVH & XUUHQW	3 Å Å		\$

'HYLFH VWUHVHG ZLWK WHQ QRQ UHSHWLWLYH (6' SXOVHV
1RQ UHSHWLWLYH FXUHQW SXOVH RUP DFFPSURLOHQWLPQ (& HFD\ ZDYHI



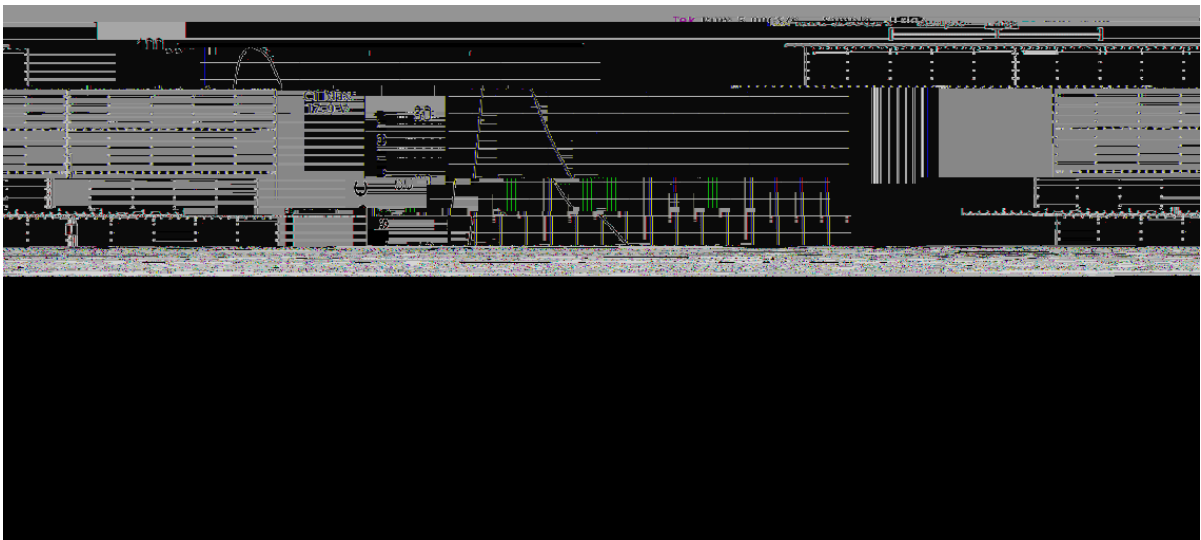
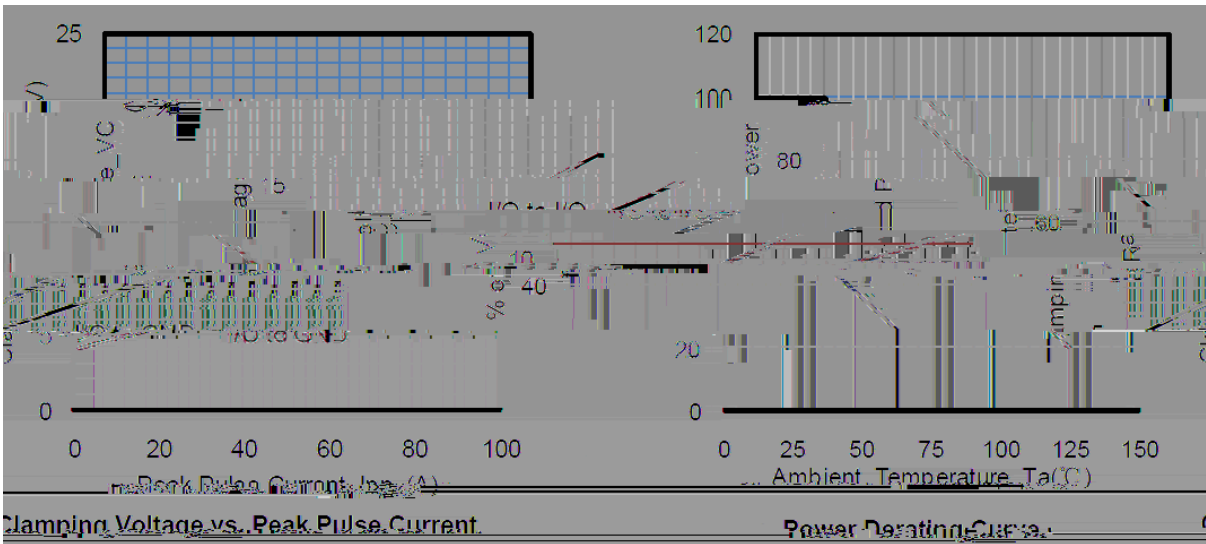
Electrical Characteristics Ta 1 &)

& #)

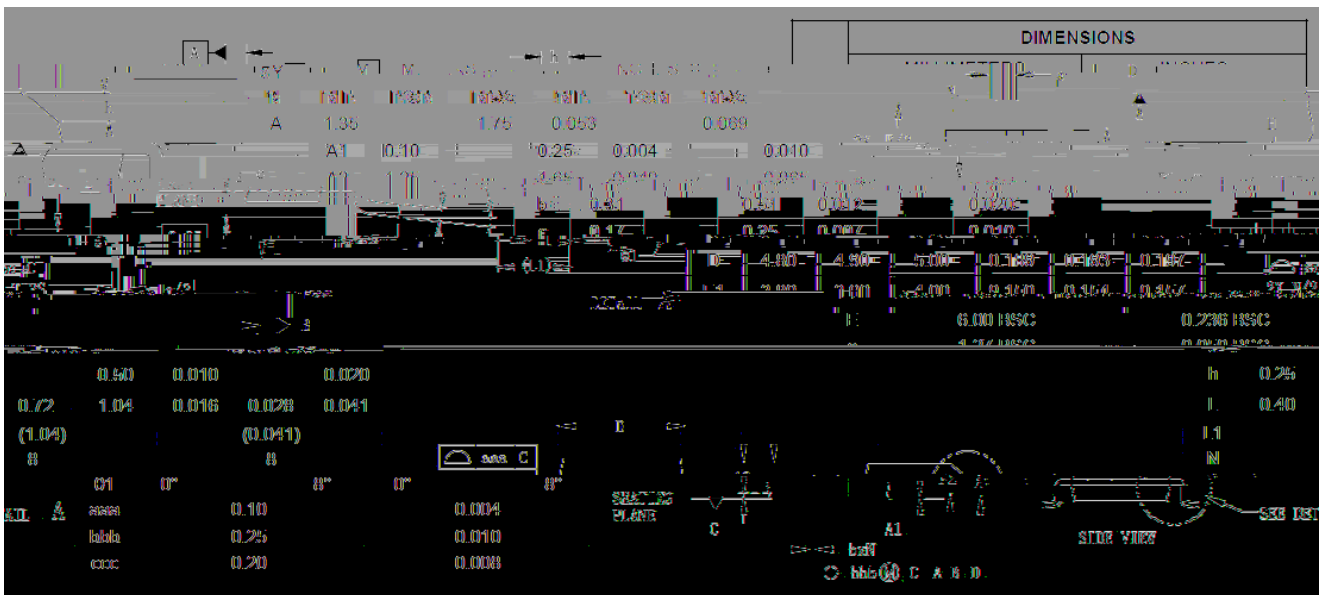
G! G %- \$ % MU b [n \ c i MU b [W]HY W \ b W h f c m]7 c " ž k @ h k X " & % m U b [^]
F Y j " % " (ž %- ! B c j ! & %



LC03-3.3



Outline Dimensions



)



LC03-3.3

Disclaimer

The information presented in this document is for reference only. Yangtze River Electronic Technology Co., Ltd. reserves the right to make changes without notice to the specifications of products displayed herein to improve reliability, performance or other reasons.

The product listed herein is designed to be used with ordinary electronic equipment or devices and not designed to be used with equipment or devices which require high level of reliability, such as nuclear reactor control, medical instruments, transport equipment, aerospace machinery, nuclear reactor control, and other safety-critical applications.

) #)