





# YJD70P03B

## Electrical Characteristics ( $T_J=25$ unless otherwise noted)

Parameter	Symbol	Conditions	Min	Typ	Max	Units
<b>Static Parameter</b>						
Drain-Source Breakdown Voltage	$BV_{DSS}$	$V_{GS}=0V, I_D=-$	-30			



Typical Electrical and Thermal Characteristics Diagrams

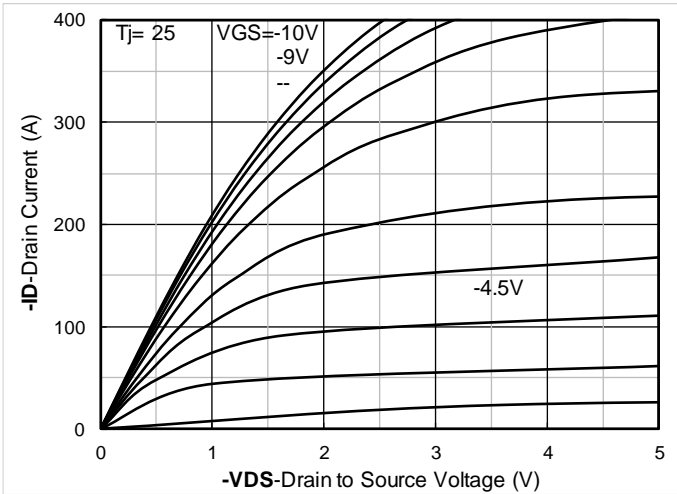


Figure 1. Output Characteristics

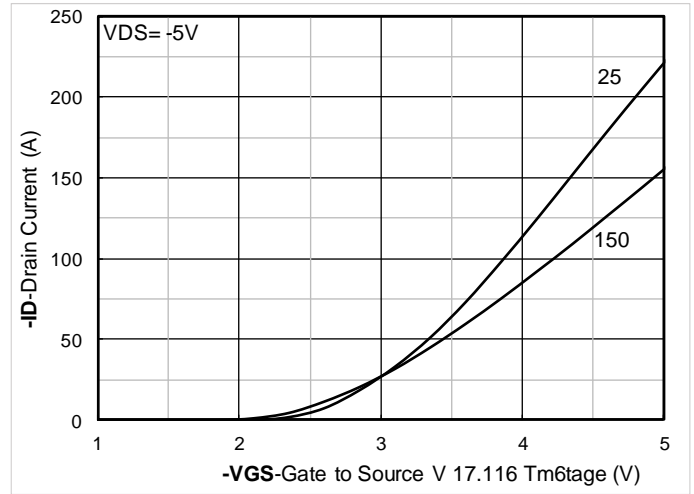


Figure 2. Transfer Characteristics

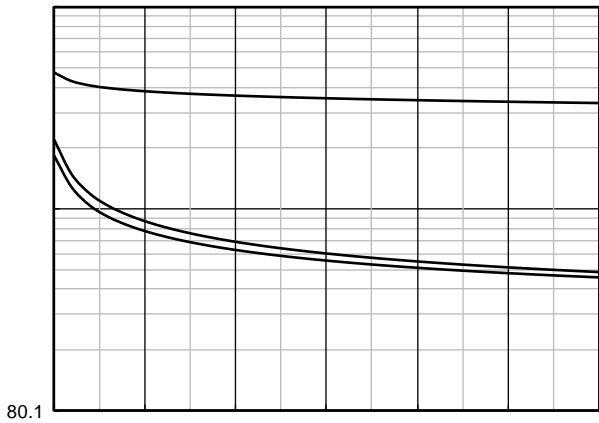


Figure 3. Capacitance Characteristics

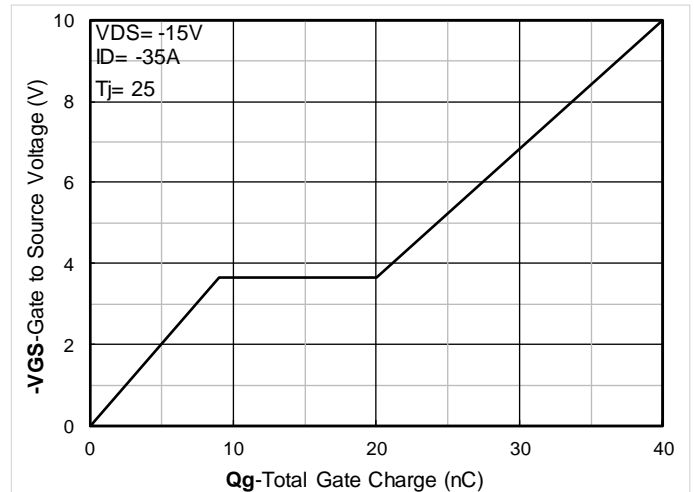


Figure 4. Gate Charge

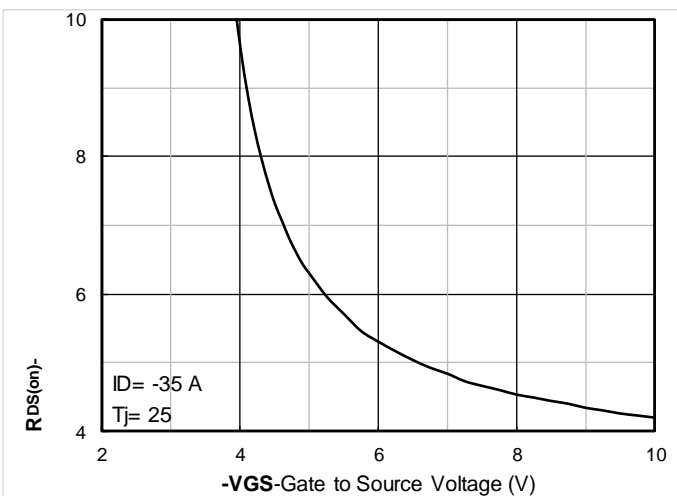


Figure 5. On-Resistance vs Gate to Source Voltage

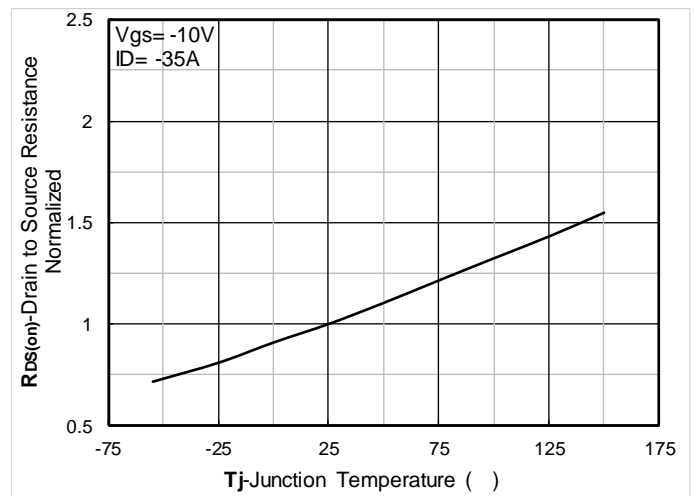


Figure 6. Normalized On-Resistance

**YJD70P03B**



# YJD70P03B

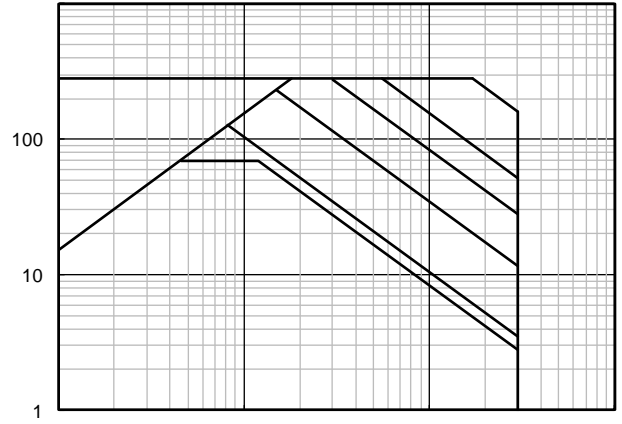
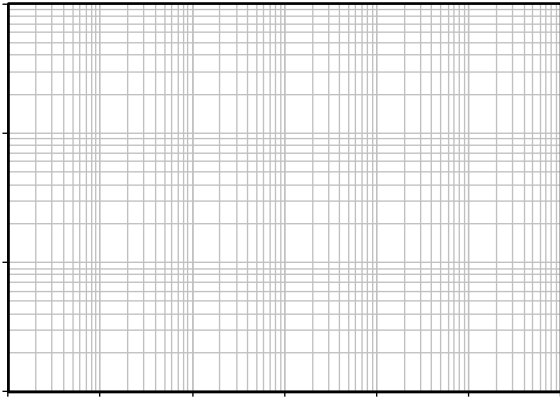
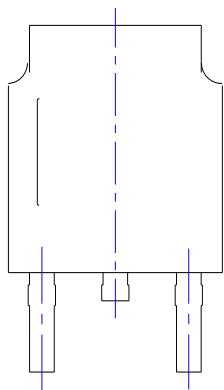
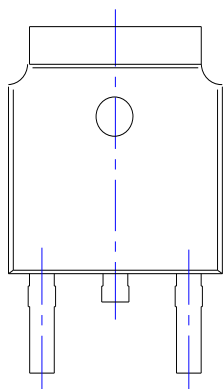


Figure60 g0 G(F)-2(i)5(gu)4(r)-3(e)JTJETQq0.000008882 0 596.04 842.04 reW\*nBT/F5 9.96 Tf1 0 0 1 g0 G(F)-2(i) 1 0re



# YJD70P03B

## TO-252-B Package information



SYMBOL	INCHES				
	MIN.	NOM.			
A1	0.000				
A2	0.087	0.091			
A3	0.035	0.039			
b	0.026	0.030			
c	0.018	0.020			
D	0.256	0.260			
D1					
D2	0.181	0.189			
E	0.390	0.398			
E1	0.236	0.240			

**NOTE:**  
1. PACKAGE BODY SIZES EXCLUDE MOLD FLASH AND GATE BURRS.  
2. TOLERANCE 0.1mm UNLESS OTHERWISE SPECIFIED.  
3. THE PAD LAYOUT IS FOR REFERENCE PURPOSES ONLY.

