



1 & KDQQHO (QKDQFHPHQW ORGH) LHC



3URGXFW 6XPPDU\
8
5 21 D-W 99 Øv \$EVROXWH OD[LPX

\$ XQOHVV RWKHUZZLVH QRWHG

3DUDPHWHU	6\PERO	/LPLW	8QLW
'UDLQ VRXUFH 9ROWDJH	96		9
*DWH VRXUFH 9ROWDJH	6	9	9

7s -

'UDLQ &XUUHQW

%	(\$ 6		P
---	-------	--	---

7RWD 3RZHU 'LVVLSDWLRO

7RWD 3RZHU 'LVVLSDWLRO

-XQFWLRO DQG 6WRUDJH 7HPHUDWXUH 5DQJH 67	7	-
--	---	---

v7KHUPDO UHVLVWDQFH

3DUDPHWHU	6\PERO	7\S	OD[8QLWV
7KHUPDO 5HVLVWDQFH -XQFWLRO WR & DVH	5			
7KHUPDO 5HVLVWDQFH -XQFWLRO WR & DVH	6WHDG\	6WDWH		5

v2UGHULQJ , QIRUPDWLRQ

35() (5(' 3	3 \$ & . 1 * & 2 '(ODUNLC	0,1,080 3 \$ & . \$ * (SF	,11(5 % 2 48 \$ 17 " < S	287(5 & \$ 5 48 \$ 17 " < S	') (5 < 02'
< - * * ° 4)	< - *	* °			



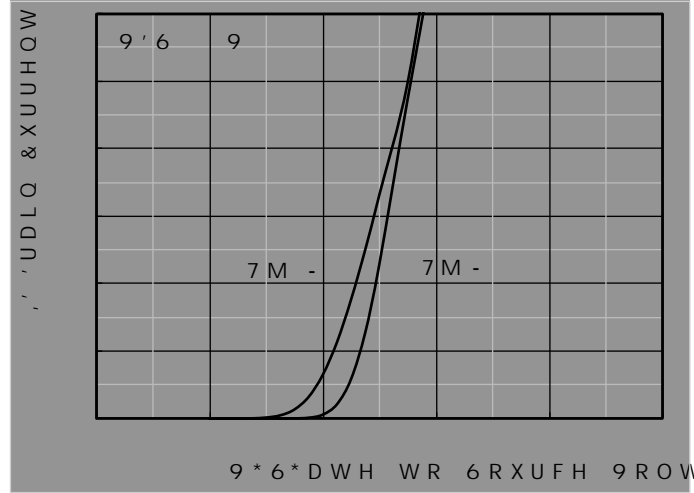
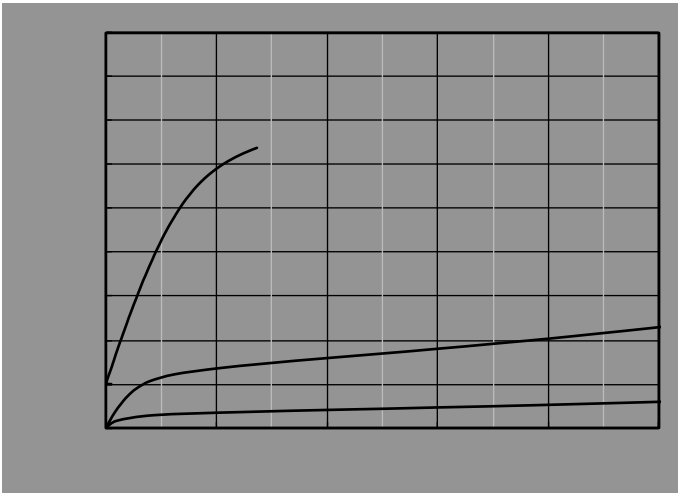
v(OHFWULFDO & KDUJH WWHIRFWKHU ZLVH QRWHG

3DUDPHWHU	6\PER	&RQGLWLRQV	OLQ	7\S	OD[8QLWV
6WDWLF 3DUDPHWHU						
'UDLQ 6RXUFH %UHDNGRZQ 9ROWDJH	9.6	9 % 9 \$	9			9
=HUR *DWH 9ROWDJH 'UDLQ & XUHQW	9.6	9.6 9 9	9			\$
*DWH %RG\ /HDNDJH & XUHQW	9.6	9.6 9 9	9			Q \$
*DWH 7KUHVKROG 9ROWDJH WK	9.6	9.6 \$	9			9
6WDWLF 'UDLQ 6RXUFH 2Q 5HVLVWDQFH	9.6	9.6 \$	9			P
'LRGH)RUZDUG 9ROWDJH	9.6	9.6 \$ 9 9				9
*DWH UHVLVWDQFH	9.6	5 0 +]				
OD[LPXP %RG\ 'LRGH & RQWLQRRXV & XUHQW						\$
'\QDPLF 3DUDPHWHUV						
,QSXW & DSDFLWDQFH	LVV	&				
2XWSXW & DSDFLWDQFH	RVV	9.6 & 9.6 9 9 0 +]				S)
5HYHUVH 7UDQVIHU & DSDFLWDQFH	UVV	&				
6ZLWFKLQJ 3DUDPHWHUV						
7RWDO *DWH & KDUJH	J	4				
*DWH 6RXUFH & KDUJH	JV	9.6 4 9.6 9 9.6 \$				Q &
*DWH 'UDLQ & KDUJH	JG	4				
5HYHUVH 5HFRYHU\ & KDUJH UU	UU	4				Q &
5HYHUVH 5HFRYHU\ 7LPH	UU	\$ GL GW \$ XV W				Q V
7XUQ RQ 'HOD\ 7LPH	'RQ	W				
7XUQ RQ 5LVH 7LPH	U	9.6 W 9.6 9 9.6 \$				Q V
7XUQ RII 'HOD\ 7LPH	'RII	W 5 (1)				
7XUQ RII IDOO 7LPH	I	W				

\$ 5HSHWLWLYH UDWLQJ SXOVSHZLWJWJXUOLPLWHG E\ PD[MXQFWLRQ WHP
 % 7- .9 9.9 9.5 / P+ , \$6 \$
 & G BV EDVHG RQ PD[D WXLQF WXRQW HPSORUWLRQLF DWDHFWKH
 ' 7KH YDQXM RHDVXUHG ZLWK WKH)GSHYLERIDURXZLWHLG RQ & RQSHU LQ WKH VWLOO
 7KH PD[LPXP DOORZHG MXQFWLRQV WDLRSHU DOWDQW RQ RQH HDSGSVO RQ L W KEH DXVGH UG HVV M.SQ



v7 \ SLFDO (OHFWULFDO DQG ZKHUPDO & KDUDFWHULVWLFV 'L

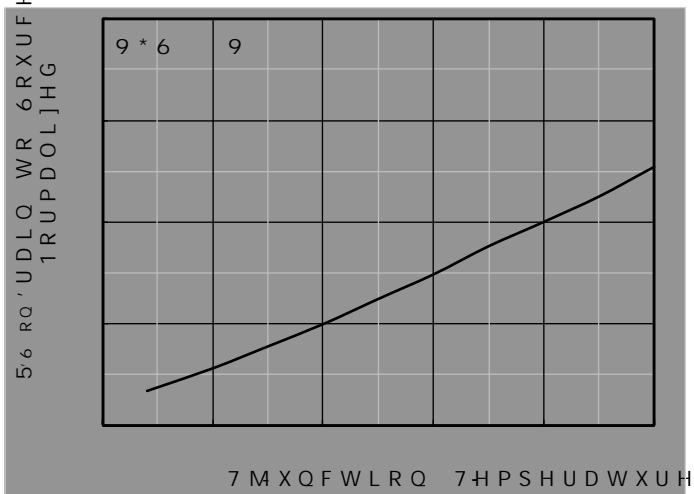
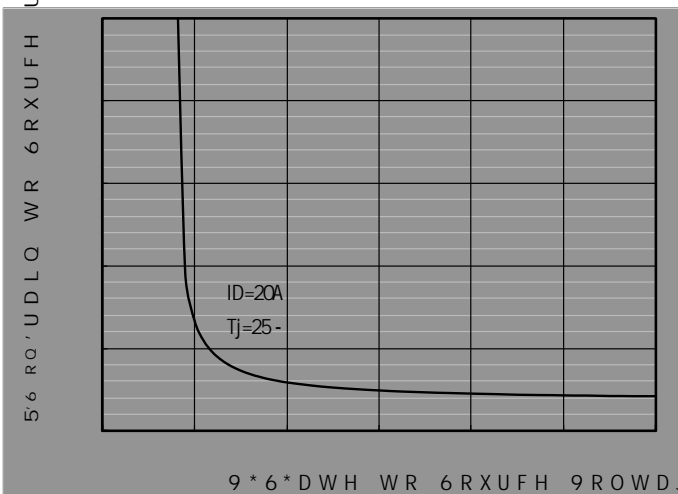


) LJXUH 2XWSXW & KDUDFWHULVWLFV) LJXUH 7UDQVI

P
UHVLVWDQFH

) LJXUH & DSDFFW WUDLQVWL & KDUD

) LJXUH *

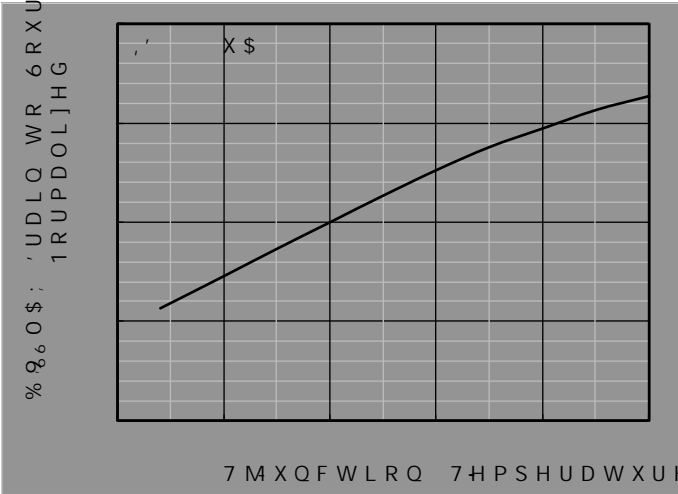


) LJXUH Q 5HVLVWDQFH YV * DWH WR 6RXUFH 9ROWDJH 2ORERD LVW



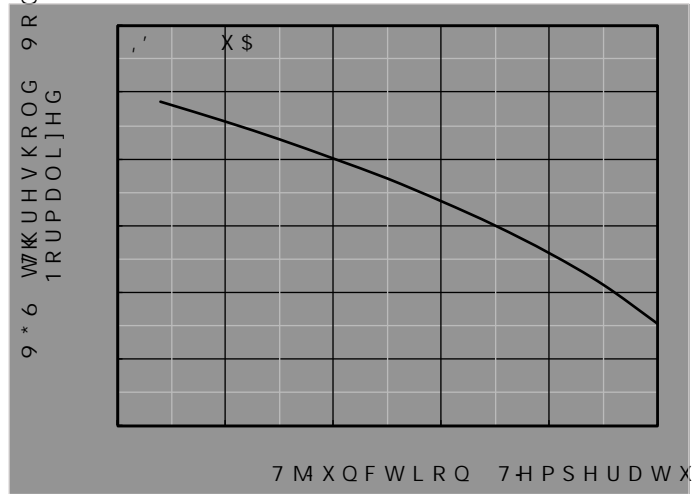
9 R O W D J H
6 R X U F H
' U D L Q W R
1 R U P D O L J H G
% 9 6 0 \$:

) L J X U H 6 R 9 6 ' U D L Q & X U U H Q W



9 R O W D J H
6 R X U F H
' U D L Q W R
1 R U P D O L J H G
% 9 6 0 \$:

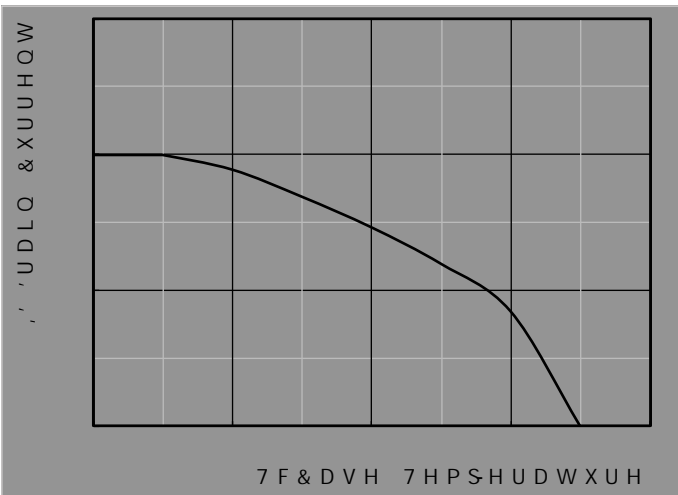
) R U Z D U) G J F X U D H U B F W H H V W H F



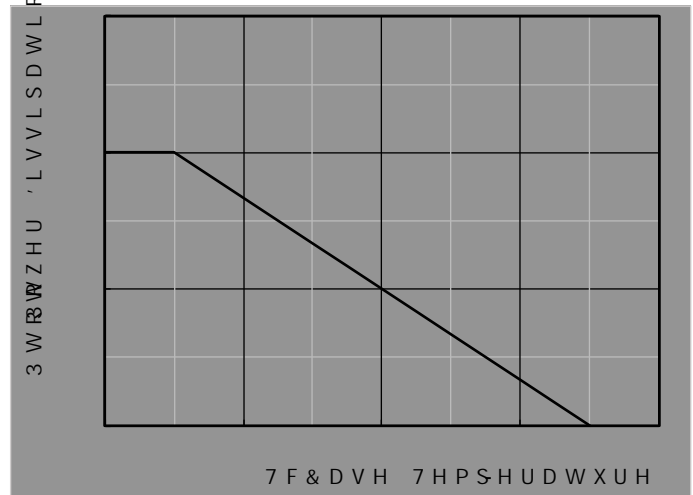
\$

) L J X U H 1 R U P D O L J H G W E D J H D N G R

) L J X U H G H 7 K U H V I R R U P O Y L R



9 R O W D J H
6 R X U F H
' U D L Q W R
1 R U P D O L J H G
% 9 6 0 \$:



) L J X U H & X U U H Q W G L V V L S D W L R Q

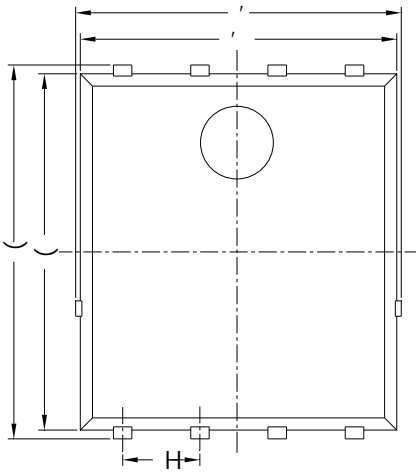
) L J X U H

5 D W H

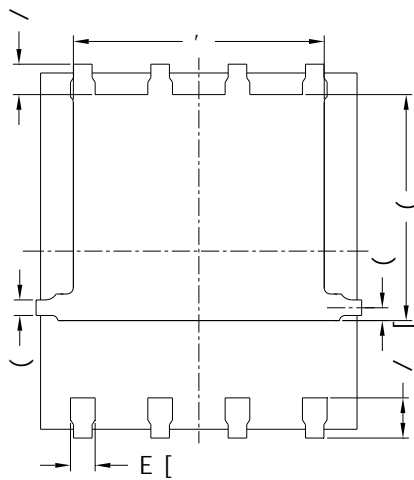
< - * * + + 4



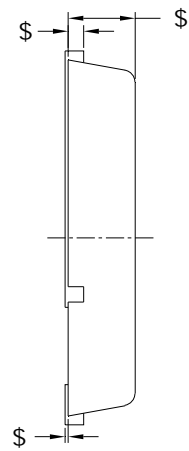
v 3 ') 1 / D F N D J H L Q I R U P D W L R Q



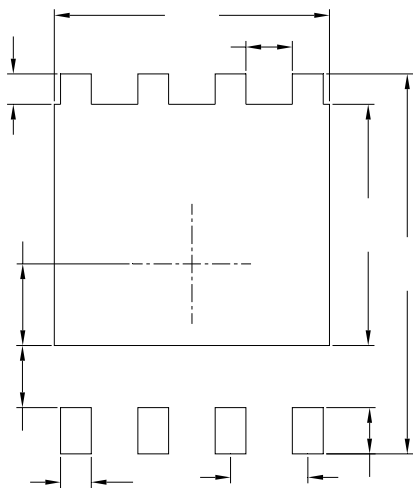
7 R S 9 L H Z
! M ? ö .



% R W W R P 9 L H Z
6 ü M ? ö .



6 L G H 9 L H Z
x M ? ö .



6 X J J H V W H G 6 R O G H U 3 D G / D
7 R S 9 L H Z

6 < 0 % 2 /	0 , / / , 0 (7 (5		
	0 , 1	1 2 0	0 \$;
(
\$			
\$		% 6 &	
,			
(
(
(5 ()	
(5 ()	
/			
/		% 6 &	
E			
H		% 6 &	

1 R W H

& B Q W U R O O L Q J G L P H Q V L R Q L Q P L O O L P
* H O H U D O W R O H U D Q F H P P
7 K H S D G O D \ R X W L V I R U U H I H U H Q F H S

< - * * + + 4
