



1 &KDQQHO (QKDQFHPHQW 0RGH)LHOG (

3URGXFW 6XPPDU\

" 9₆ 9
" ' \$
" 5₆ 2₁ DW 9 9 Ø P
" (\$ 6 7HVWHG
" j 9₆ 7HVWHG

*HQHUDO 'HVFULSWLRQ

" 6SOLW JDWH WUHQFK 026)(7 WHFKQRORJ
" ([FHOOHQW 8 DFNW HGLR VLSDWLRQ
" +LJK GHQVLW\ FHOQ GHVLJQ IRU ORZ 5
" 0RLVWXUH 6HQVLWLYLW\ /HYHO
" (SR[\ 0HHWV 8)ODPDELWLW\ 5DWLQJ
" +DORJHQ)UHH
" 3DUW QR ZLWKHQXIVL\$(& 4 TXDOLILHG

\$SSOLFDWLRQV

" 3RZHU VZLWFKLQJ DSSOLFDWLRQ
" 8QLQWHUUXSWLEOH SRZHU VXSSO\
" '& '& FRQYHUWU

v \$EVROXWH 0D[LPXW 5DWLQJ MVV RWKHUZLVH QRWHG

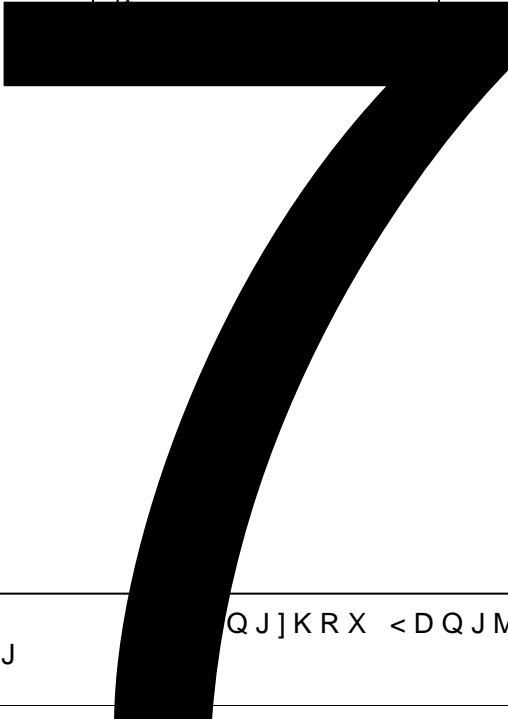
Table with 4 columns: 3DUDPHWHU, 6\PERO, /LPLW, 8QLW. Rows include 'UDLQ VRXUFH 9ROWDJH and *DWH VRXUFH 9ROWDJH.

'UDLQ &XUUHQW

7s - 7

\$

Table with 4 columns and 3 rows, containing numerical data and symbols like 3 and :





< - * * + + 4

v(OHFWULFDO & KDUDFWXUDLWLRW KHUZLVH QRWHG

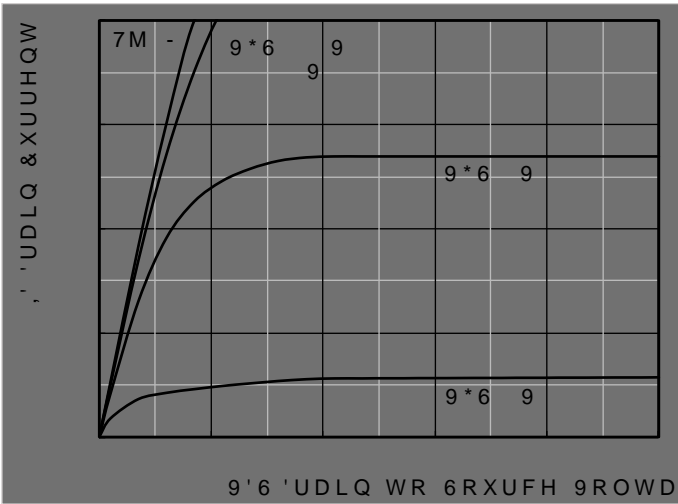
3DUDPHWHU	6\PERC	&RQGLWLRQV	0LQ	7\S	0D[8QLWV
6WDWLF 3DUDPHWHU						

'UDLQ 6RXUFH %UHDNGRZQ 9ROWDJH +6 %9, 9

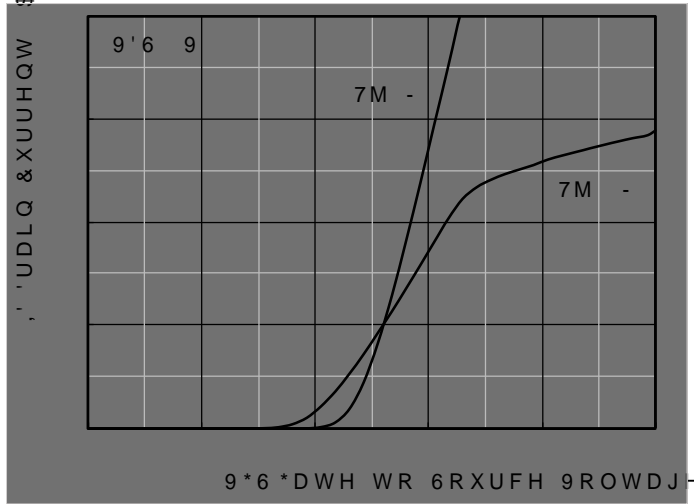


v7\SLFDO (OHFWULFDO DQG 7KHUPDO &KDUDFWHULVWLFV 'LDJUDP

\$



\$

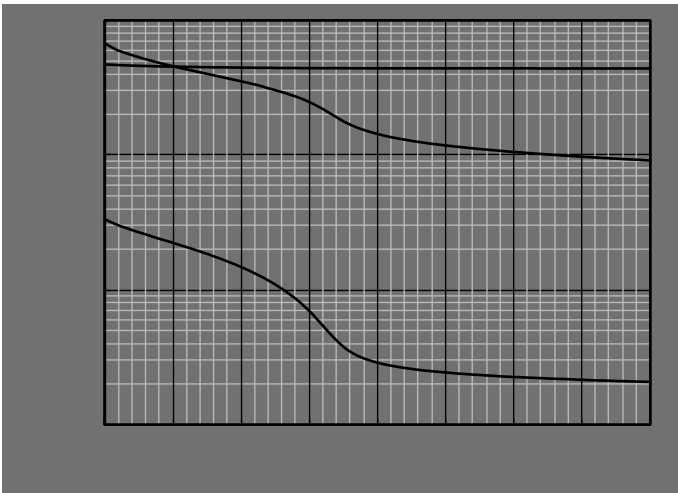


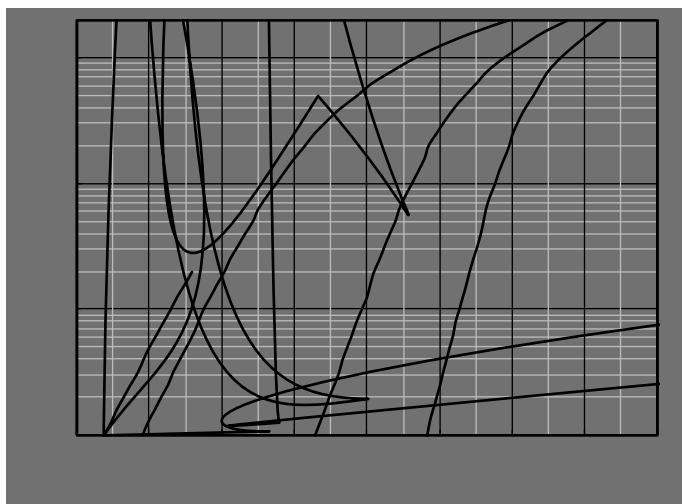
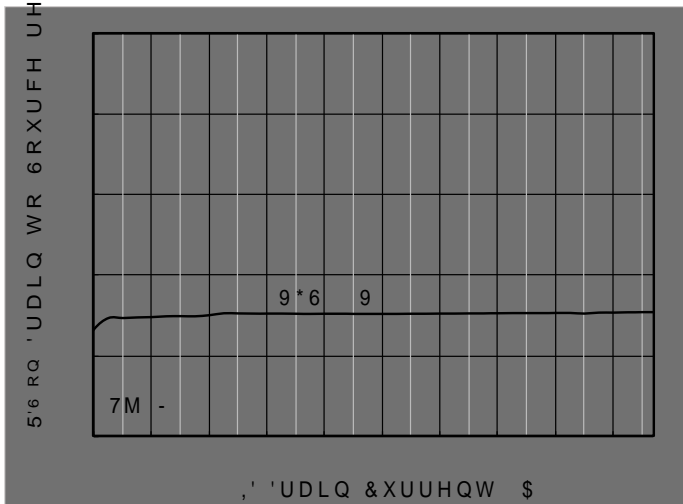
)LJXUH

2XWSXW &KDUDFWHULVWLFV

)LJXUH

7UDQVIHU &KD





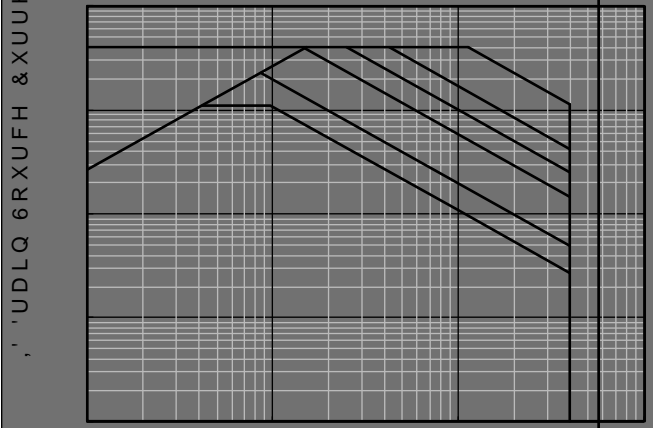
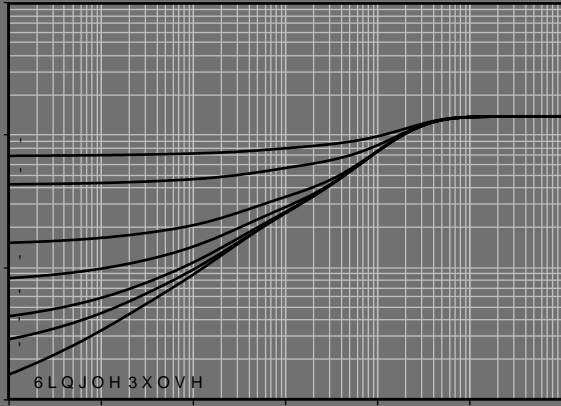


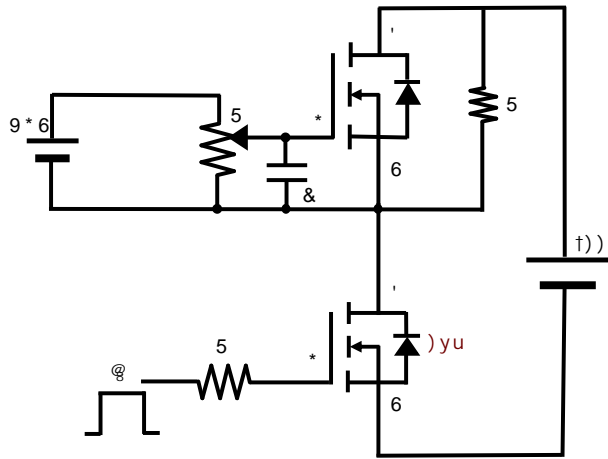
< - *

* \$

++4

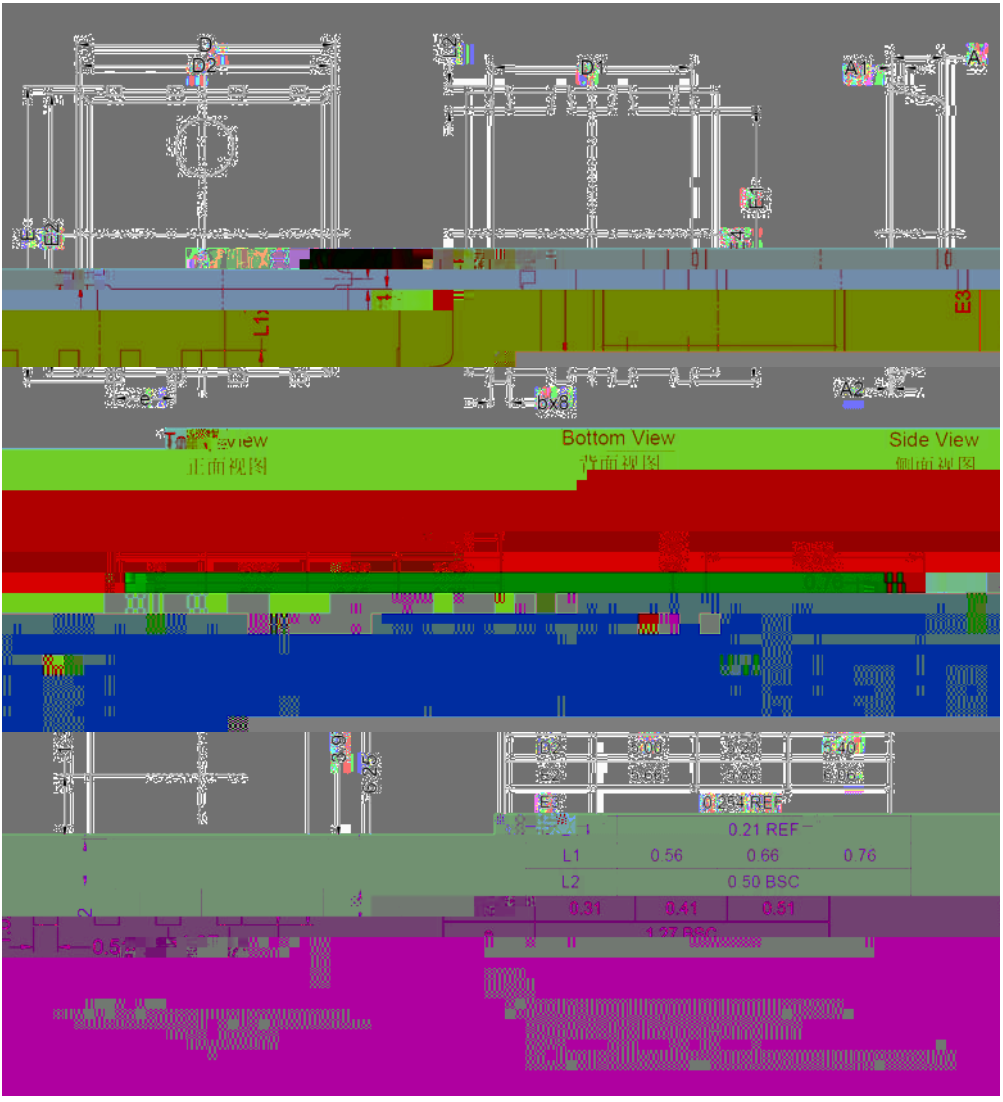
=WK& 7KHUPDO 5HVL:VWDQFH







v 3')1 / 00 D3 FNDJH LQIRUPDWLRQ





< - * * + + 4
