



$r_{DS(ON)}$ ( at  $V_{GS}=10V$ )                      590m  
 $R_{DS(ON)}$ ( at  $V_{GS}=4.5V$ )                      600m

### General Description

High density cell design for Low  $R_{DS(ON)}$   
 High Speed switching  
 High power and current handling capability  
 Moisture Sensitivity Level 1  
 Epoxy Meets UL 94 V-0 Flammability Rating  
 Halogen Free

### Applications

PWM applications  
 DC-DC convertor

### Absolute Maximum Ratings ( $T_A=25$ unless otherwise noted)

Parameter		Symbol	Limit	Unit
Drain-source Voltage		$V_{DS}$	200	V
Gate-source Voltage		$V_{GS}$	$\pm 20$	V
Drain Current	$T_A=25$	$I_D$	1	A
	$T_A=100$		0.6	
Pulsed Drain Current <sup>A</sup>		$I_{DM}$	8	A
Total Power Dissipation <sup>B</sup>	$T_A=25$	$P_D$	1.35	W
	$T_A=100$		0.55	
Junction and Storage Temperature Range		$T_J, T_c$ <sup>A</sup>	M -	

### Thermal resistance

Parameter		Symbol	Typ	Max	Units
Thermal Resistance Junction-to-Ambient <sup>C</sup>	Steady-State	$R_{JA}$	70	90	/W

### Ordering Information (Example)

PREFERRED P/N	PACKING CODE	Marking	MINIMUM PACKAGE(pcs)	INNER BOX QUANTITY(pcs)	OUTER CARTON QUANTITY(pcs)	DELIVERY MODE
YJJ2612AJ	F2	2612AJ	3000	30000	120000	7" reel

**YJJ2612AJ**



# YJJ2612AJ

## Typical Electrical and Thermal Characteristics Diagrams

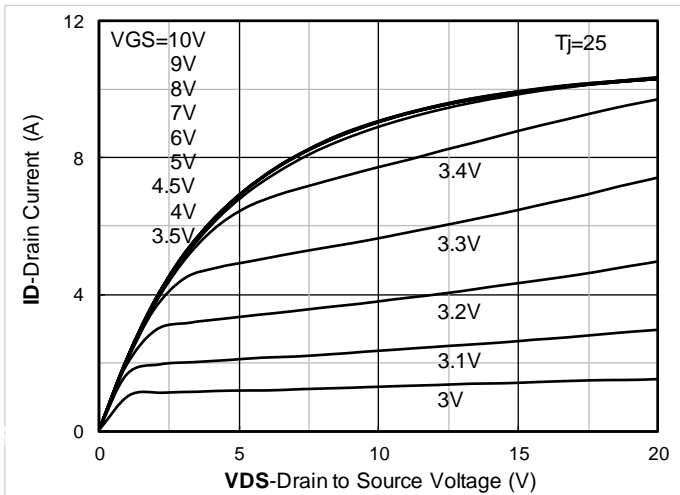


Figure 1. Output Characteristics

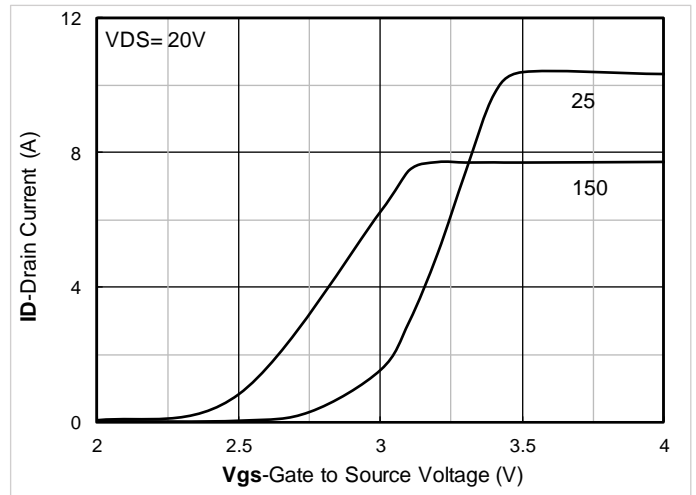


Figure 2. Transfer Characteristics




YJJ2612AJ

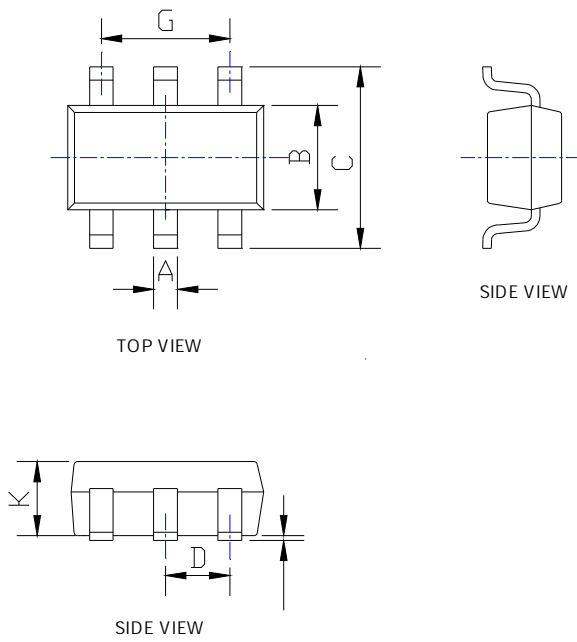
---





# YJJ2612AJ

## SOT-23-6L Package Information



DIMENSIONS				
SYMBOL	INCHES		Millimeter	
	MIN.	MAX.	MIN.	MAX.
A	0.012	0.020	0.300	0.500
B	0.059	0.067	1.500	1.700
C	0.104	0.116	2.650	2.950
D				
E				
F				
G				
H	0.111	0.119	2.820	
I				
J				
K	0.041	0.045	1.050	1.150
L	0.012	0.024	0.300	0.600
M	0.004	0.008	0.100	0.200
	0°	8°	0°	8°

