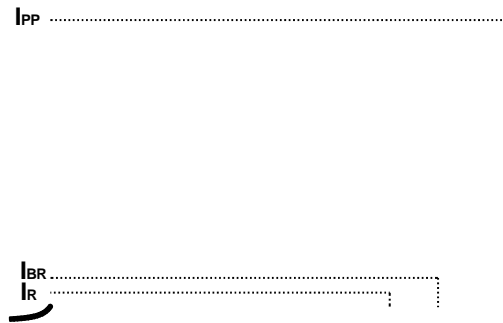




ESD24VD3BQ

1- Line, Bi-directional, ESD protection diode

- V_{RWM} Reverse stand-off voltage
- I_R Reverse leakage current
- V_{BR} Reverse breakdown voltage
- V_{CL} Clamping voltage
- I_{PP} Peak pulse current





ESD24VD3BQ

Maximum Ratings

PARAMETER	SYMBOL	LIMITS	UNIT
Peak pulse power ($t_p = 8/20\mu s$)	P_{pk}	300	W
ESD according to IEC61000-4-2 air discharge	V_{ESD}	± 30	KV
ESD according to IEC61000-4-2 contact discharge		± 30	
Junction temperature	T_J	-55~150	
Storage temperature	T_{STG}	-55~150	

Notes:

CAUTION: Stresses above those listed in "Absolute Maximum Ratings" may cause permanent damage to the component. This is a stress only rating and operation of the component at these or any other conditions above those indicated in the operational sections of this specification is not implied.

Electrical Characteristics $T_J=25$

PARAMETER	Symbol	UNIT		Min	Typ	Max
Reverse Standoff Voltage	V_{RWM}	V	$I_R = 1\mu A$			24
Reverse breakdown voltage	V_{BR}	V	$I_{BR} = 1mA$	26.7		
Reverse leakage current	I_R	μA	$V_{RWM} = 24V$			1.0
Clamping voltage ¹⁾	V_{CL}	V	$I_{PP} = 1A, t_p = 8/20\mu s$			32
			$I_{PP} = 5A, t_p = 8/20\mu s$			42
			$I_{PP} = 7A, t_p = 8/20\mu s$			44

Dynamic resistance ²⁾

= 8 =

c r R_{DYN}

4

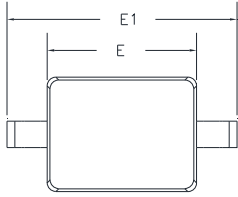
D

.

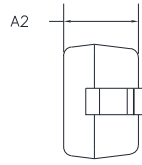




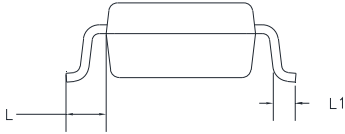
Outline Dimensions



TOP VIEW



SIDE VIEW



SIDE VIEW

Marking Information



Note:

1. All marking is at middle of the product body
2. All marking is in laser marking
3. Body color: Black

(6 ' 9 ' % 4

'LVFODLPHU

7KH LQIRUPDWLRQ SGRF ~~MDM~~ ~~QHG~~ LQ IR ~~KL~~ ~~DI~~ ~~HJ~~ ~~K~~ ~~R~~ ~~H~~ ~~B~~ ~~Q~~ ~~MLH~~ (OHFWURQLF 7HFKQRO
ULJKW WR PDNH FKDLF ~~JH~~ ~~VR~~ ~~ZL~~ ~~WK~~ ~~R~~ ~~X~~ ~~VS~~ ~~K~~ ~~RL~~ ~~S~~ ~~UR~~ ~~D~~ ~~G~~ ~~X~~ ~~I~~ ~~R~~ ~~V~~ ~~/~~ ~~R~~ ~~L~~ ~~W~~ ~~S~~ ~~O~~ ~~D~~ ~~\~~ ~~H~~ ~~G~~ ~~K~~ ~~H~~ ~~U~~ ~~H~~ ~~L~~ ~~Q~~ ~~W~~ ~~R~~ ~~G~~ ~~H~~ ~~P~~ ~~S~~ ~~L~~ ~~W~~ ~~R~~ ~~Y~~
RU RWKHUZLVH

7KH SURGXFW ~~OL~~ ~~V~~ ~~G~~ ~~H~~ ~~/~~ ~~K~~ ~~J~~ ~~H~~ ~~G~~ WR EH ~~M~~ ~~V~~ ~~H~~ ~~G~~ ~~H~~ ~~Z~~ ~~E~~ ~~D~~ ~~H~~ ~~R~~ ~~D~~ ~~X~~ ~~R~~ ~~P~~ ~~G~~ ~~W~~ ~~V~~ ~~Y~~ ~~J~~ ~~Q~~ ~~H~~ ~~G~~ IRU XVH LQ PHG
VDYLQJ OLIHVXVW ~~B~~ ~~D~~ ~~Q~~ ~~J~~ ~~M~~ ~~L~~ ~~H~~ ~~R~~ ~~R~~ ~~P~~ ~~D~~ ~~Q~~ ~~V~~ ~~Q~~ ~~H~~ ~~B~~ ~~Q~~ ~~V~~ ~~X~~ ~~P~~ ~~H~~ ~~E~~ ~~H~~ ~~R~~ ~~U~~ ~~D~~ ~~S~~ ~~E~~ ~~Q~~ ~~L~~ ~~E~~ ~~M~~ ~~C~~ ~~R~~ ~~\~~ ~~B~~ ~~R~~ ~~O~~ ~~W~~ ~~G~~ ~~P~~ ~~D~~ ~~U~~ ~~R~~
P VXFK LPSURSHU XVH RI VDOH

7KLV SXEOLFDWLRQ ~~S~~ ~~V~~ ~~O~~ ~~S~~ ~~F~~ ~~H~~ ~~U~~ ~~D~~ ~~G~~ ~~I~~ ~~V~~ ~~L~~ ~~Q~~ ~~U~~ ~~R~~ ~~P~~ ~~D~~ ~~X~~ ~~S~~ ~~L~~ ~~S~~ ~~Q~~ ~~I~~ ~~S~~ ~~G~~ ~~H~~ ~~Y~~ ~~R~~ ~~U~~ ~~X~~ ~~G~~ ~~G~~ ~~L~~ ~~W~~ ~~R~~ ~~Q~~ ~~D~~ ~~O~~ ~~L~~ ~~Q~~ ~~W~~ ~~H~~ ~~P~~ ~~D~~ ~~W~~ ~~R~~
KW ~~V~~ ~~S~~ ~~Z~~ ~~\~~ ~~D~~ ~~Q~~ ~~J~~ ~~M~~ ~~L~~ ~~H~~ ~~R~~ ~~R~~ ~~P~~ ~~R~~ ~~Q~~ ~~V~~ ~~X~~ ~~O~~ ~~\~~ ~~R~~ ~~X~~ ~~U~~ ~~Q~~ ~~H~~ ~~D~~ ~~U~~ ~~H~~ ~~V~~ ~~<~~ ~~D~~ ~~Q~~ ~~J~~ ~~M~~ ~~L~~ ~~H~~ ~~\~~ ~~D~~ ~~Q~~ ~~V~~ ~~D~~ ~~H~~ ~~O~~ ~~H~~ ~~V~~ ~~R~~ ~~I~~ ~~L~~ ~~F~~ ~~H~~ ~~I~~ ~~R~~ ~~U~~ ~~I~~ ~~X~~ ~~U~~