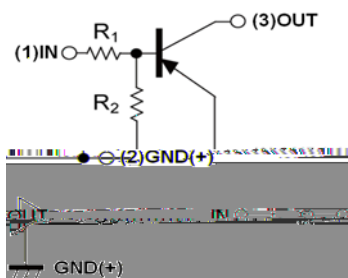
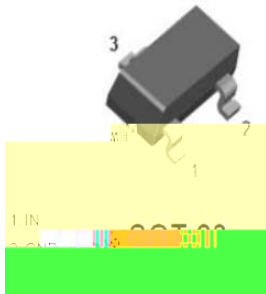


PNP Digital Transistors (Built-in Resistors)



Features

Application

Mechanical data Package Terminals

Maximum Ratings

Item	Symbol	Unit	Conditions	Value
Input voltage	V_i	V		- & \$ to Ž +
Output current	I_o	mA		-1 \$ \$
Power dissipation	P_D	mK		& \$ \$
> unction temperature	$> T$			



DTA143XCA

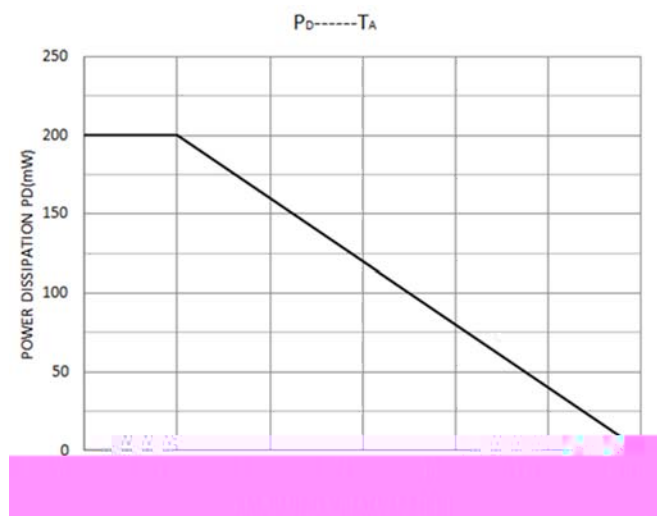
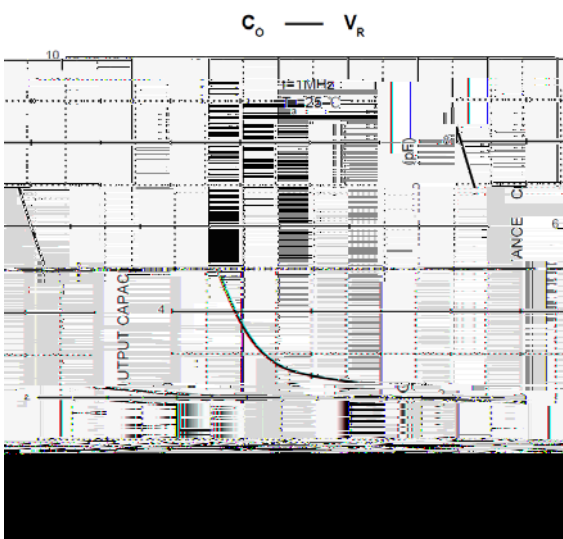
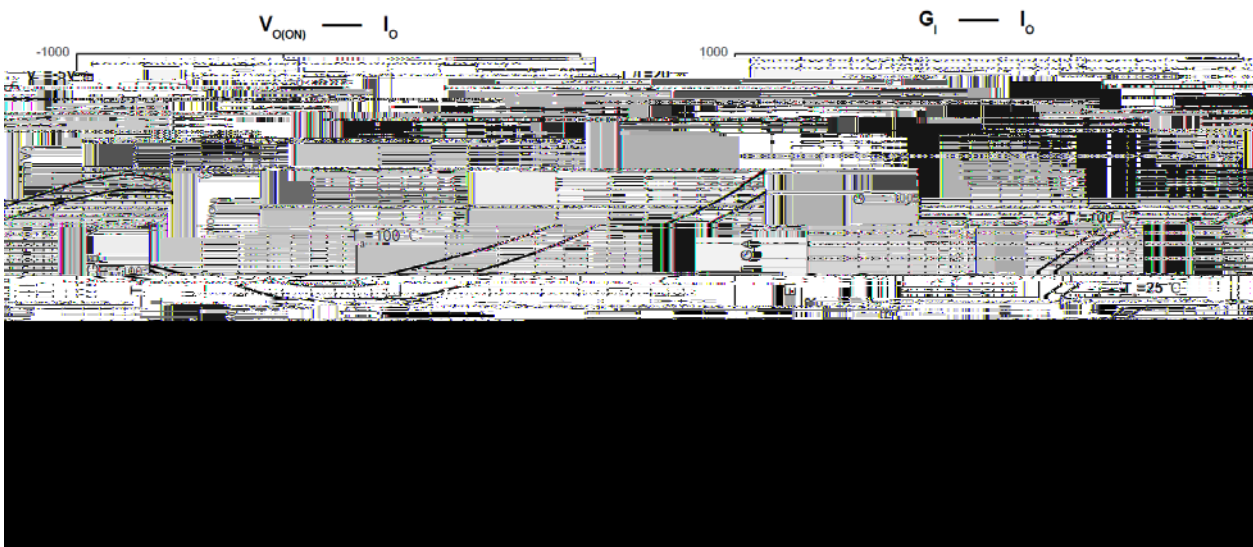
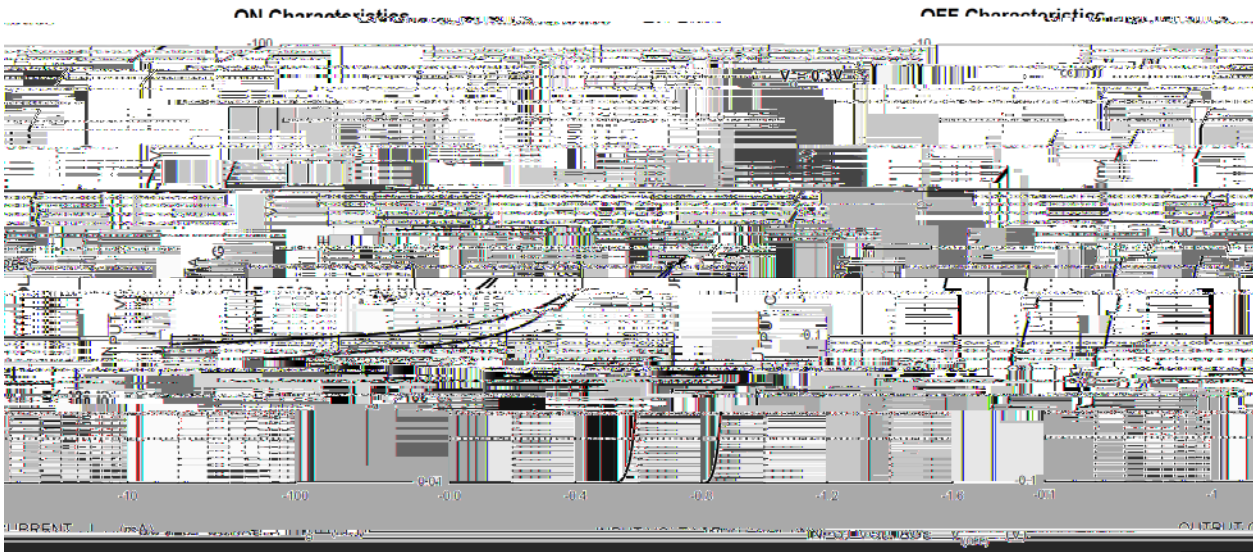
RoHS
COMPLIANT

Electrical Characteristics

Item	Symbol	Unit	Conditions	Min	Typ
------	--------	------	------------	-----	-----

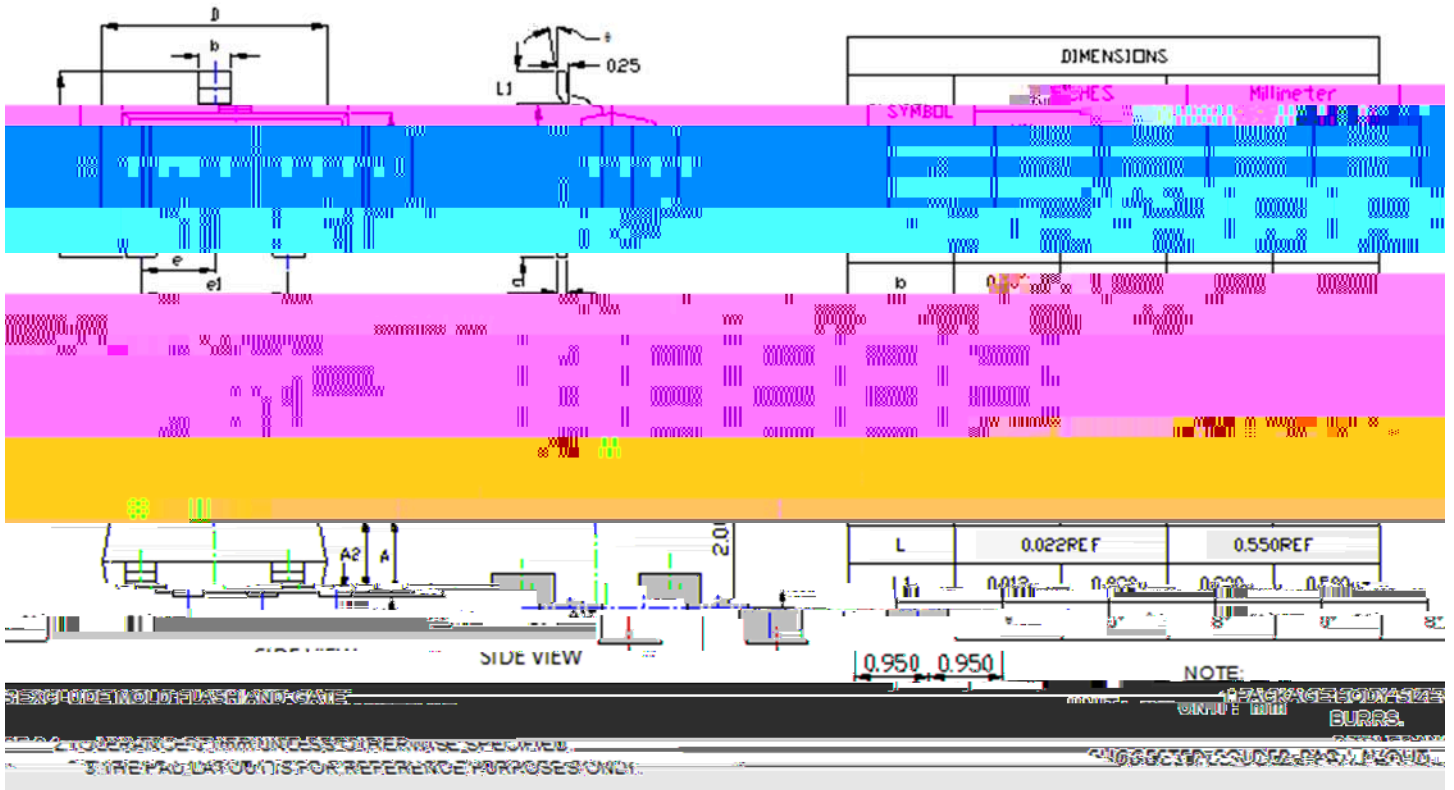


Characteristics





Outline Dimensions



Note:

1. All dimensions are in millimeters (mm) unless otherwise specified.

All dimensions shown are exclusive of burrs and gate residues. Burrs and gate vestiges shall not exceed 0.15 mm in maximum.

所有尺寸均不包括毛刺和浇口残留。毛刺和浇口痕迹不得超过0.15毫米的最大值。

Dimension b does not include a tabular protrusion of max. 0.100 mm. [尺寸b不包括单边最大0.100 mm的申筋凸出部分]

Dimension b does not include a tabular protrusion of max. 0.100 mm. [尺寸b不包括单边最大0.100 mm的申筋凸出部分]

Dimensions D and E are external limit dimensions; they do not include mold mismatch. [D和E是塑封体的外部极限尺寸；不包括包封溢料、内引线溢料、凸出部分以及胶体毛刺，但是包含了包封错位的最大尺寸]

Dimensions D and E shall be planar with respect to one another within a maximum of 0.076 mm relative to the seating plane.

D和E应在最大0.076毫米的范围内相对于安装平面是共面的。

Dimensions D and E shall be planar with respect to one another within a maximum of 0.076 mm relative to the seating plane.

Dimensions D and E shall be planar with respect to one another within a maximum of 0.076 mm relative to the seating plane.

Dimensions D and E shall be planar with respect to one another within a maximum of 0.076 mm relative to the seating plane.

Dimensions D and E shall be planar with respect to one another within a maximum of 0.076 mm relative to the seating plane.

Dimensions D and E shall be planar with respect to one another within a maximum of 0.076 mm relative to the seating plane.

Dimensions D and E shall be planar with respect to one another within a maximum of 0.076 mm relative to the seating plane.

Dimensions D and E shall be planar with respect to one another within a maximum of 0.076 mm relative to the seating plane.

Dimensions D and E shall be planar with respect to one another within a maximum of 0.076 mm relative to the seating plane.

Dimensions D and E shall be planar with respect to one another within a maximum of 0.076 mm relative to the seating plane.

Dimensions D and E shall be planar with respect to one another within a maximum of 0.076 mm relative to the seating plane.

Dimensions D and E shall be planar with respect to one another within a maximum of 0.076 mm relative to the seating plane.

Dimensions D and E shall be planar with respect to one another within a maximum of 0.076 mm relative to the seating plane.

Dimensions D and E shall be planar with respect to one another within a maximum of 0.076 mm relative to the seating plane.

Dimensions D and E shall be planar with respect to one another within a maximum of 0.076 mm relative to the seating plane.



DTA143XCA

RoHS
COMPLIANT

Disclaimer

