



12

CANEC25030712728

2025 12 17

1 7

6

Violet Shi

Scan to see the report



Unless





CANEC25030712728

2025 12 17

2 7

		SGS ID	
SN1	A57	CAN25-0307127-0001.C057	

(1) 1 mg/kg = 1 ppm = 0.0001%

(2) MDL=

(3) ND = (< MDL)

(4) "-" =

o p RoHS q r 2011/65/EU s t ll u v w q r (EU) 2015/863-x y z y { y | } ~ y € , f , (PBB)y € ,
..., f € , , € ,





CANEC25030712728

2025 12 17

3 7

			MDL	A57
(NonaBDE)	-	mg/kg	25	ND
(DecaBDE)	-	mg/kg	25	ND
(2-) (DEHP)	1000	mg/kg	50	ND
(BBP)	1000	mg/kg	50	ND
(DBP)	1000	mg/kg	50	ND
(DIBP)	1000	mg/kg	50	ND

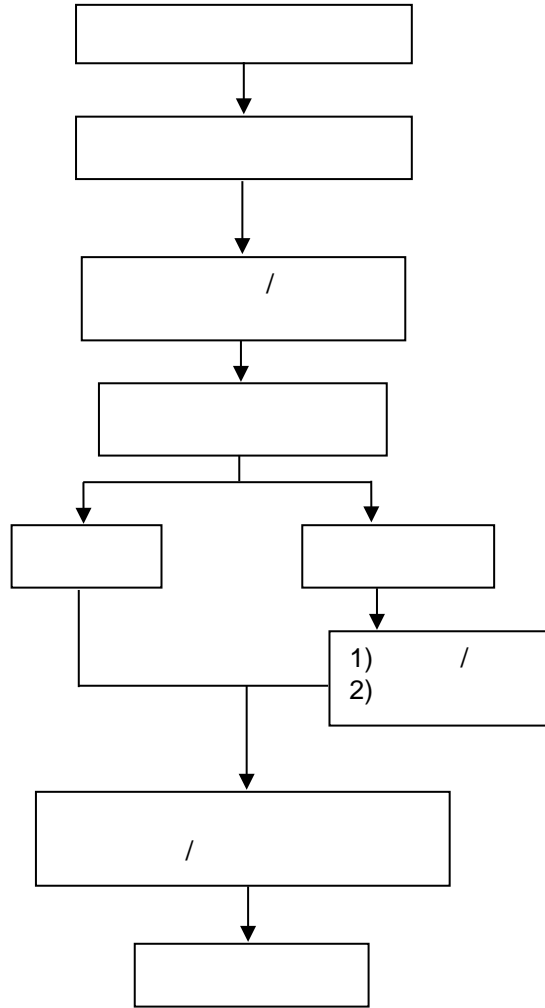
1 ° /

- (1) RoHS (EU) 2015/863
- (2) IEC 62321 EN 62321
- (3) 2021 7 22 DEHP BBP DBP DIBP

A57 (Pb) RoHS 2011/65/EU () |ANNEX III 7(c)-
 II ()

<https://rohs.sgsonline.com.cn/PDFLinks/zh-cn/RSTS-TP-037%20RoHS%20Exemption%20%28CN%29.pdf>
 ILAC-G8:09/2019 w=0





有限公司
★
金華市
金華市
金華市



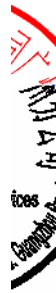
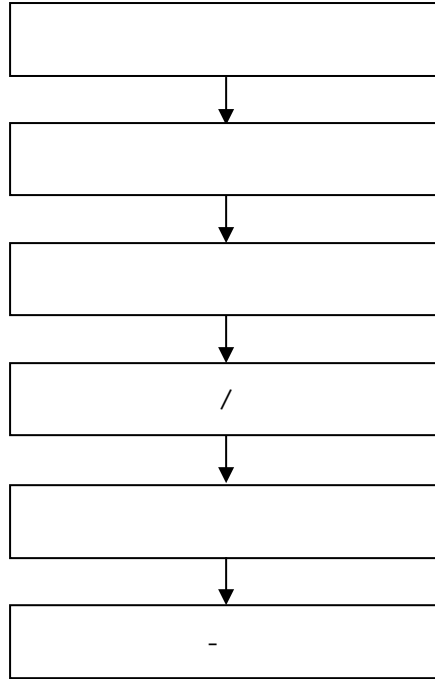
CANEC25030712728

2025 12 17

5 7



PBB(s)/PBDE(s)/Phthalates



Unless

CANEC25030712728

